

How to install and use QScreen

一、Install QScreen

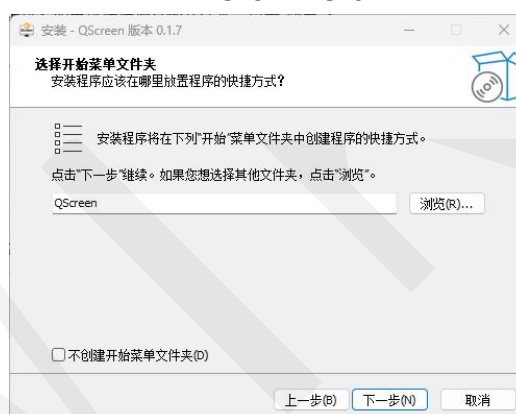
Open the accompanying QScreen application and double-click to install it.

 QScreen_0.1.7_Setup.exe 2026/1/16 14:42 应用程序 64,824 KB

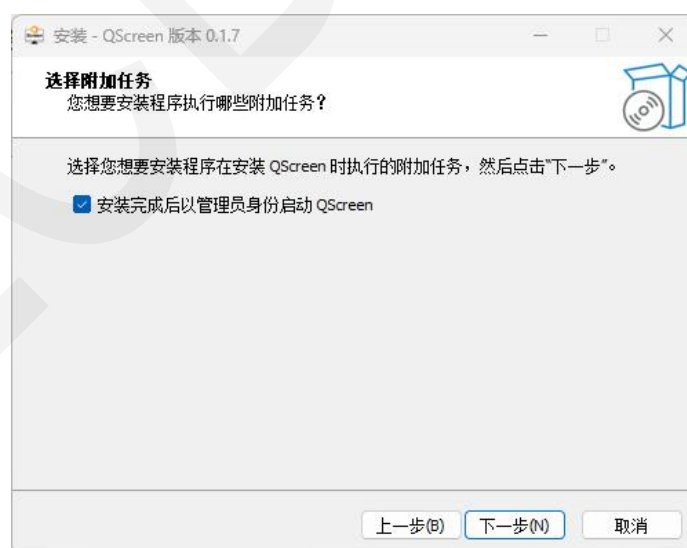
Choose the installation location by yourself



Click "Next"



Check the option to start QScreen in administrator mode after the installation is completed.



Click "Next" to proceed with the installation. After the installation is complete, double-click the icon on the desktop to open QScreen. Connect one end of the included USB cable to the secondary screen and the other end to the computer. Click the "Display" button at the bottom left to quickly activate the secondary screen. The editor will automatically recognize the relevant display parameters of the host. For detailed instructions, see below.

① After powering on, the editor will automatically identify the model of the connected secondary screen.

② After powering on, the editor will automatically recognize the resolution of the connected secondary screen.

③ After powering on, the editor will automatically recognize the resolution of the connected secondary screen. Click on the "Display" drop-down list. Users can select the template themes provided by the editor at the current resolution.

④ After clicking, you can import themes that you have created or those created by other users.

⑤ Click to restore the topic

⑥ Click to switch to the Chinese or English theme.

⑦ Click the plus or minus button or directly enter the brightness value to adjust the current screen brightness.

⑧ Click the plus or minus buttons or directly input the rotation value to adjust the display angle of the current screen.

⑨ Clicking on it allows you to edit the current theme or customize the theme. Detailed instructions can be found in "Introduction to Theme Editor Usage".

⑩ After powering on, the editor will automatically identify the GPU model of the connected secondary screen. If the host has a discrete graphics card, clicking on the drop-down list will display the discrete graphics card model. If it does not have a discrete graphics card, only the GPU model will be displayed.

⑪ This is a drop-down list of the network interface selection interface. The list sequentially lists the network adapters recognized by the system. The visible options include physical network cards (Ethernet 2, WLAN), multiple virtual local connections with asterisk numbers, and a Loopback pseudo-interface for local loopback testing.

⑫ Clicking on the drop-down list will display all the hard drive models of the current host, and you can click to select for display.

⑬ Clicking on the drop-down list will display all the disk partitions of the current host, such as C drive and D drive. You can click to select for display.

⑭ Enter the weather host obtained by the user from Weifeng Weather. The acquisition method is described below.

⑮ Enter the weather APIKey obtained by the user from Weifeng Weather. The acquisition method is described below.

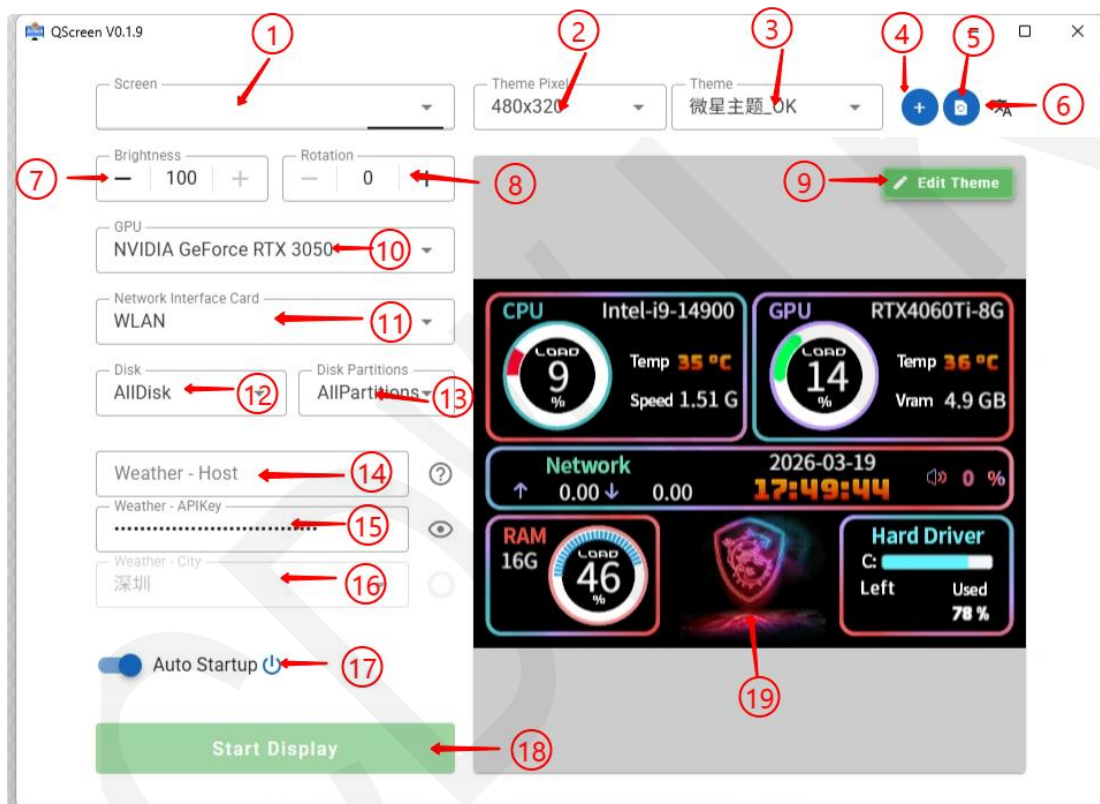
⑯ After entering the weather Host and Weather APIKey, the city weather display can be set.

⑰ Click the selection switch to choose whether to enable the startup editor.

If enabled, the host will automatically open the software for running and display if it connects to the secondary screen during the next startup.

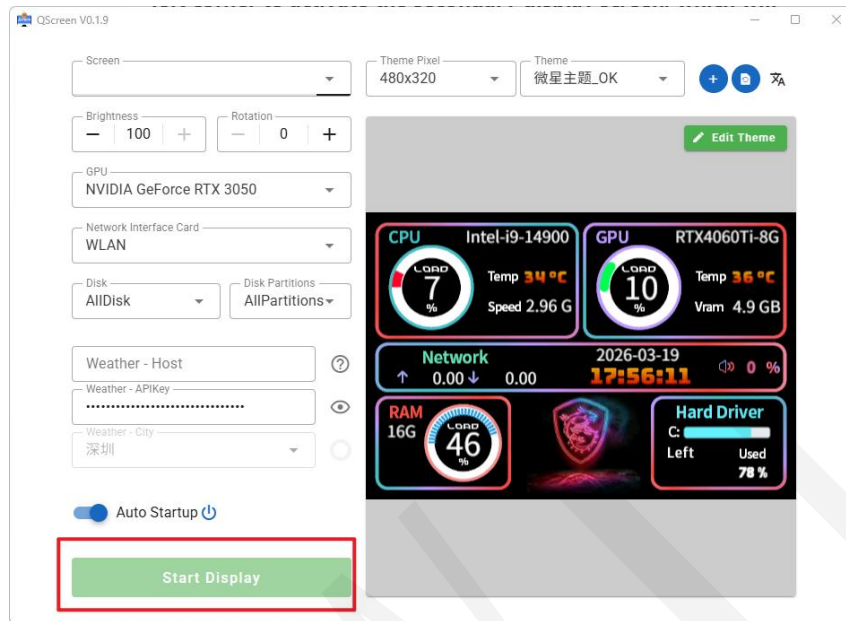
⑱ Click the button to turn on the screen display. Click again to turn off the screen display.

⑲ This is the preview effect of the current secondary screen theme.



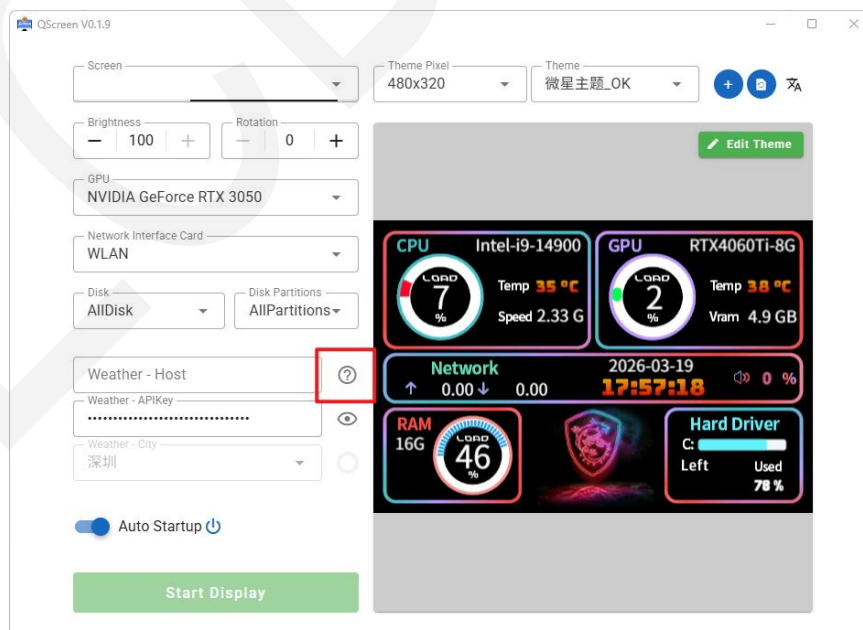
Note: The display of the corresponding functions based on the click selection is only possible when the control is available for the current theme. It does not automatically display after selection; users can switch between different themes, modify themes to add controls, or customize themes to display the desired functions. The modification method can be found in the "Introduction to Theme Editor Usage".

After selecting the required parameters, click the lower left corner to activate the secondary display screen, which will then enable the display.



二、Obtain the Weather Host and API Key

Click on the question mark to the right of the "Weather Host" and then go to the registration page of Weifeng Weather.



Click the "Free Registration" button to register. If you already have an account, click the console at the top right corner to log in.



① After logging in, this page will automatically be redirected to. If it doesn't redirect automatically, find the console at the top right corner, click on it to perform the redirection, and then enter the console. After entering the console, click on the project management section. Here, all the projects created will be displayed. If this is the first login, there will be no projects.

② Click the "Create Project" button to create a new project.



- ① Enter your project name in the input box below the project title. The name can consist of any characters.
- ② After inputting, click the save button to save the information.



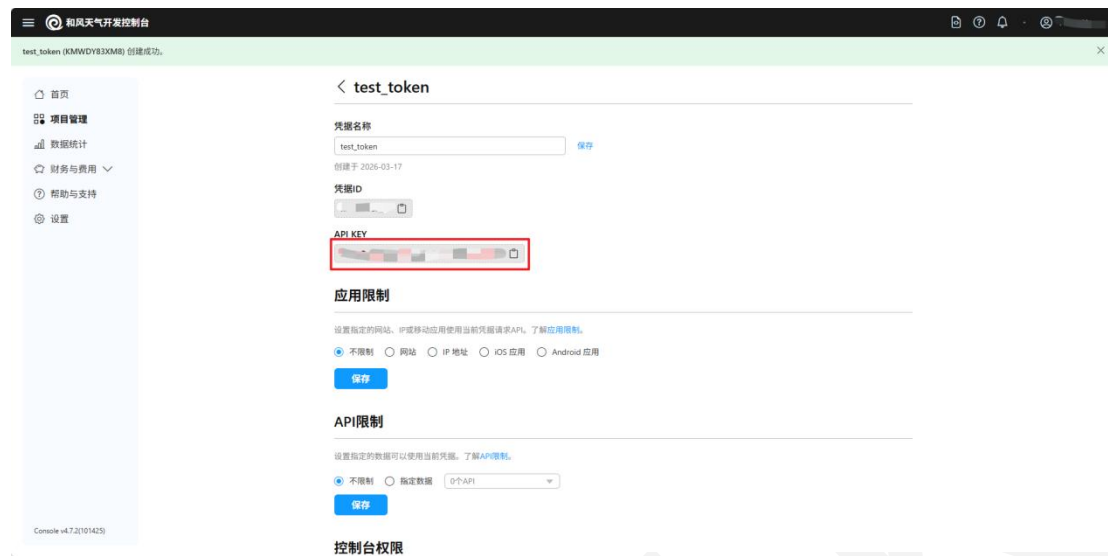
Click the "Create Credential" button



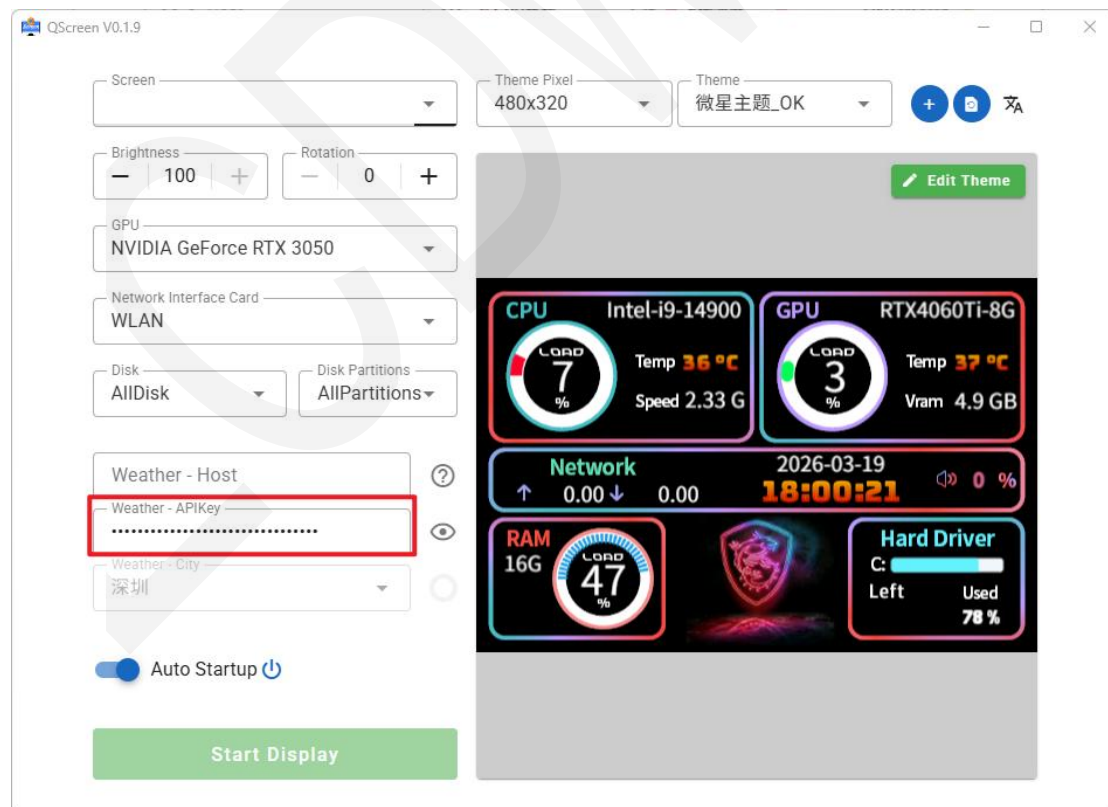
- ① Enter any name in the input box below the voucher name.
- ② Select the API KEY method for authentication.
- ③ Here, choose the enabled APIs based on your personal situation. By default, all APIs are enabled. If this is your first time creating, there is no such option.
- ④ Click the Save button to save.



After saving, it will redirect to this page. Clicking on it is sufficient. We only need to copy the API KEY. The other parts can be adjusted according to your personal needs.



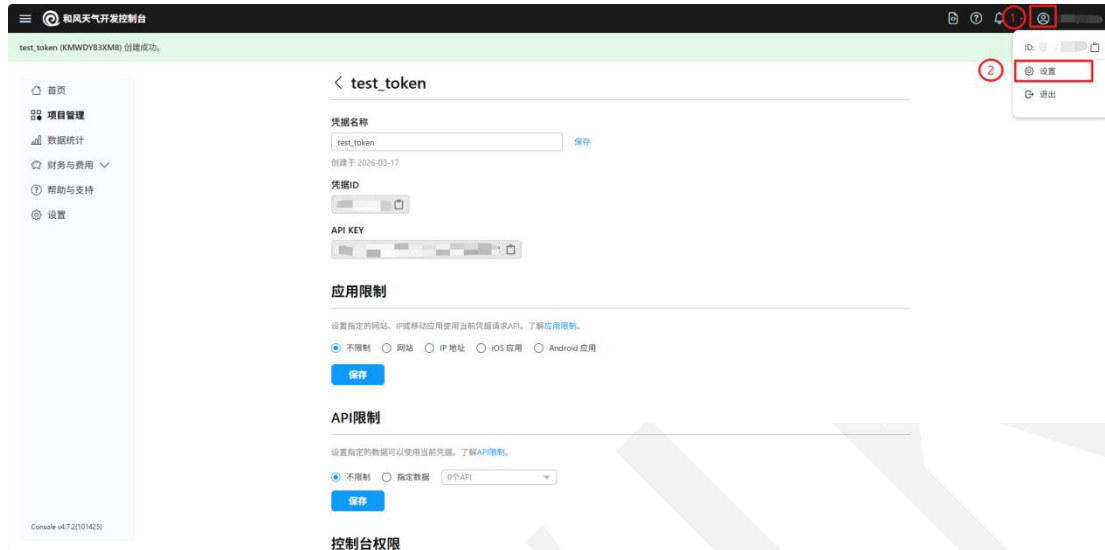
Let's go back to the editor and paste the API Key that we just copied here.



We return to the editor, paste the API Key that was just copied here

① and fill it in. Then we go back to the webpage and click the avatar or account at the top right corner of the page. A drop-down list will appear

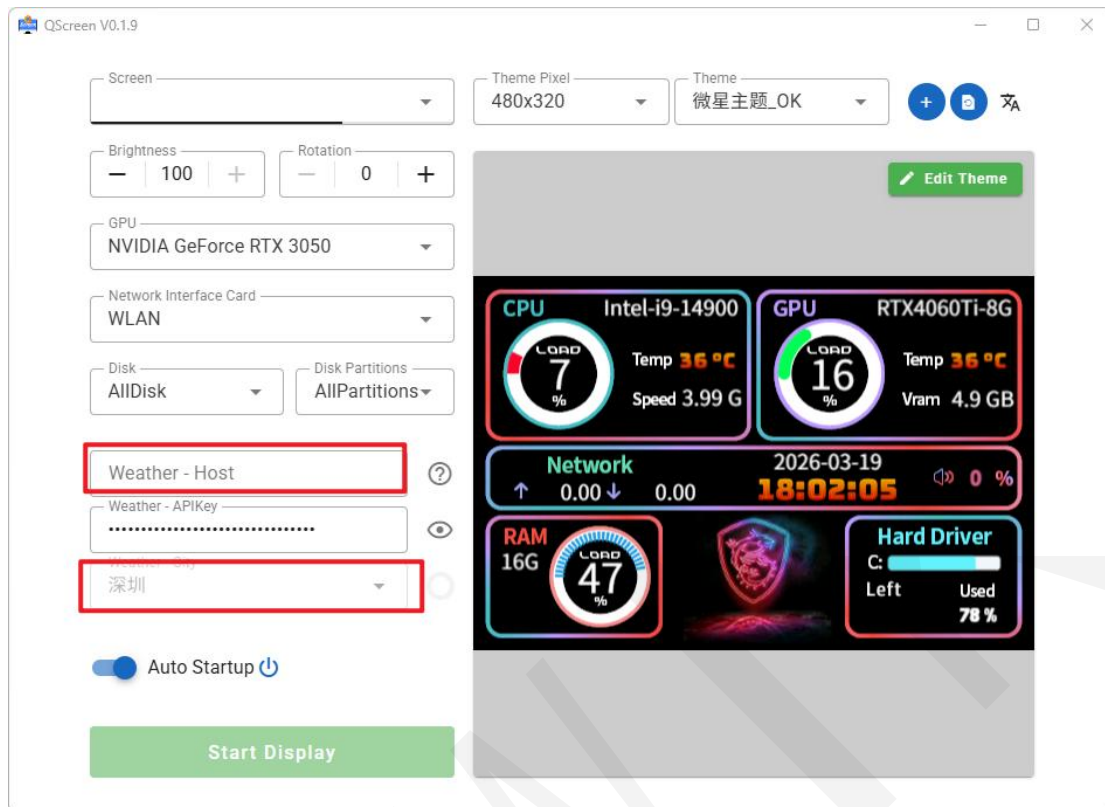
② and click the "Settings" button to enter the settings.



Copy the API Host located here



Return to the editor, paste it into the "Weather Host" box here, and you can select the city below to obtain the weather information.



Finally, click to enable the screen display, and select the theme with the weather component to enable the display.