

## 4.3inch ESP32-S3 Display Quick Start Manual



## 1. Product power on

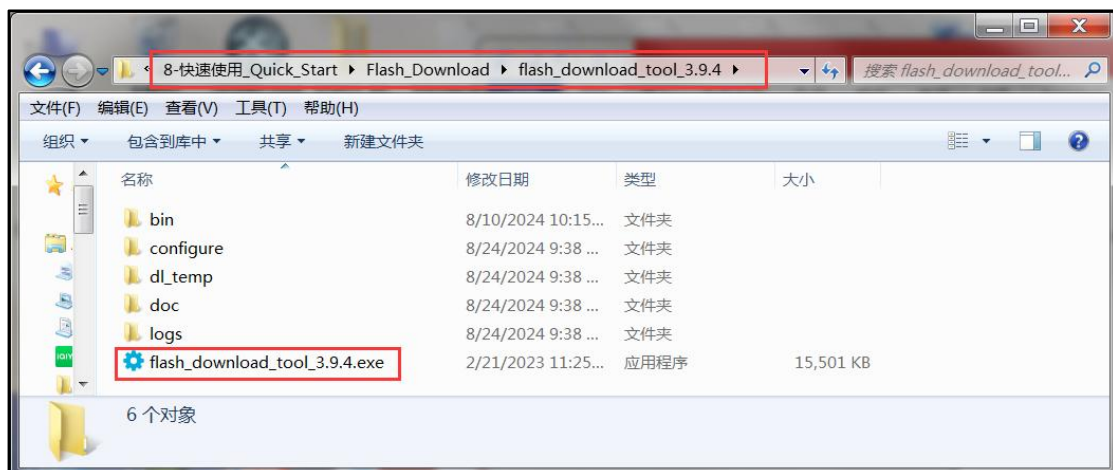
Use a Type-C cable with power and data transmission functions to connect the computer and the product, and power on the product. As shown in the following figure:



Picture 1 Product power on

## 2. Update the bin file

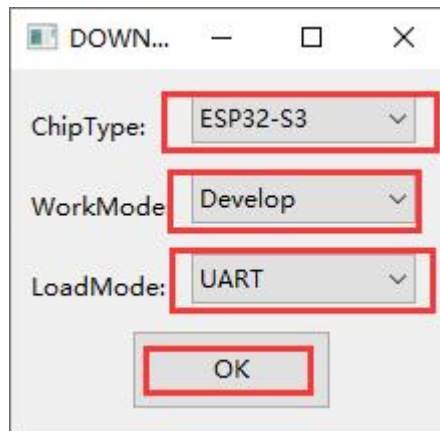
- A. Open the “**flash\_download\_tool**” folder in the “**8-快速使用\_Quick\_Start**” directory on your computer, locate the “**flash\_download\_tool**” folder and after opening that folder, double-click the **flash\_download\_tool.exe** executable file, as shown in the following figure:



Picture 2 Open flash\_download\_tool

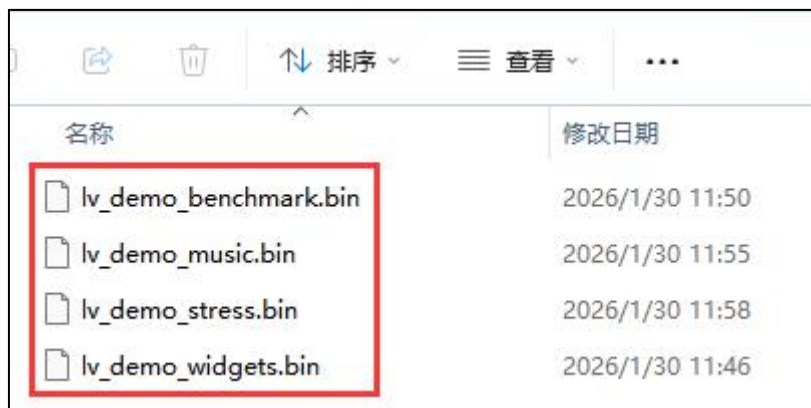
- B. After opening the Flash Download Tool, select "**ESP32-S3**" for ChipType,

"Develop" for WorkMode, keep the default (UART) for LoadMode, and then click the "OK" button, as shown in the following figure:



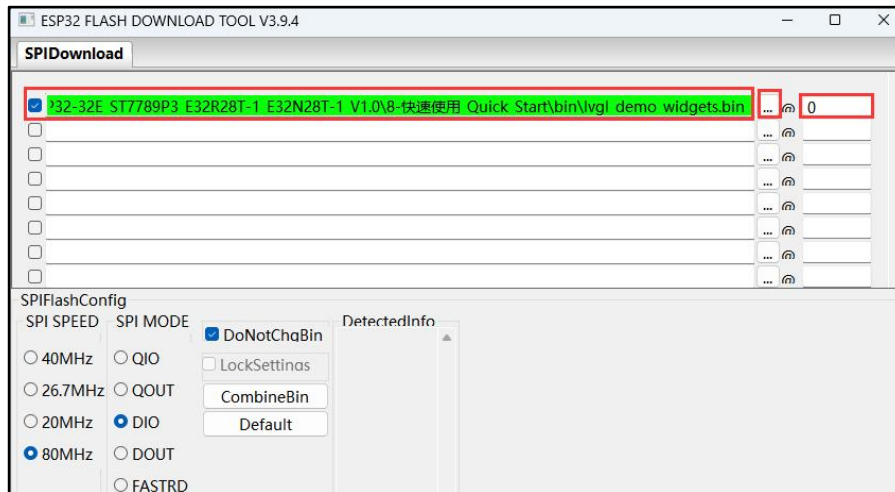
Picture 3 flash\_download\_tool settings 1

- C. Enter the Flash download tool interface, first select the bin file that needs to be burned, the bin file is in the “8-快速使用\_Quick\_Start/bin” of the material package, as shown in the figure below:



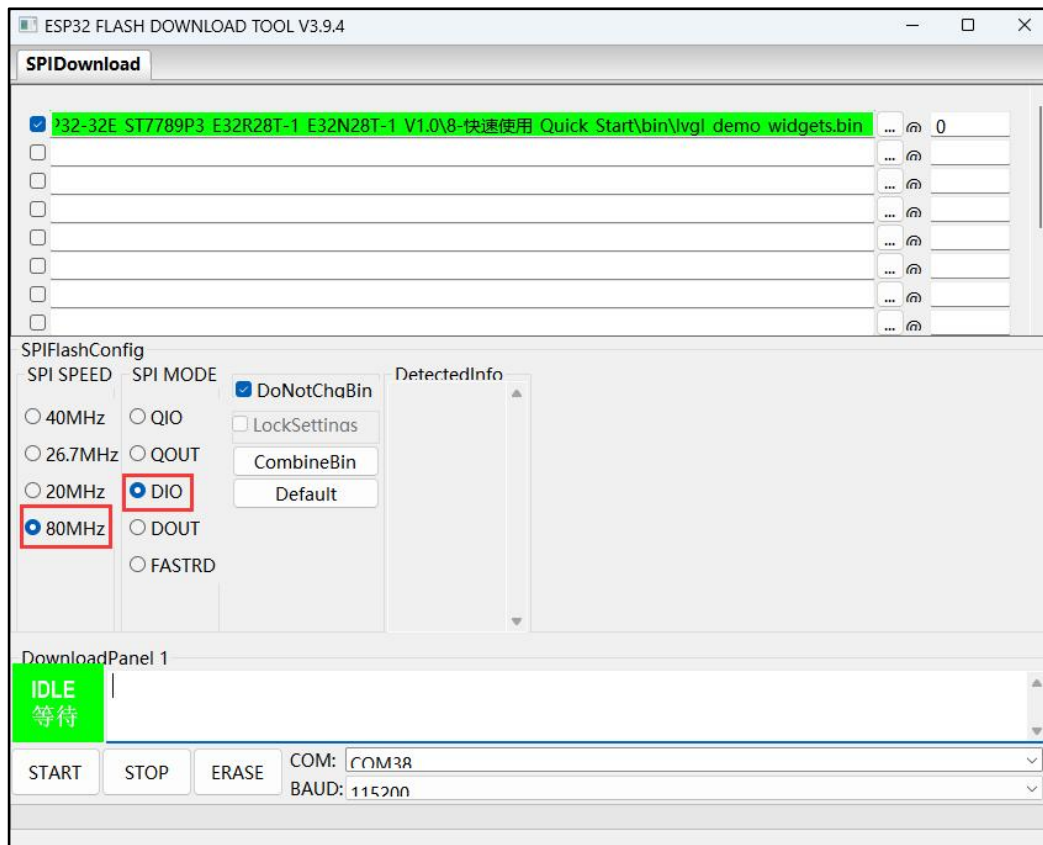
Picture 4 Location of the bin file

- D. Click the button in the middle with three dots to select the bin file in the above step, check the box in front after the selection is completed, and then set burn address to "0", as shown in the following figure:



Picture 5 choose Bin file

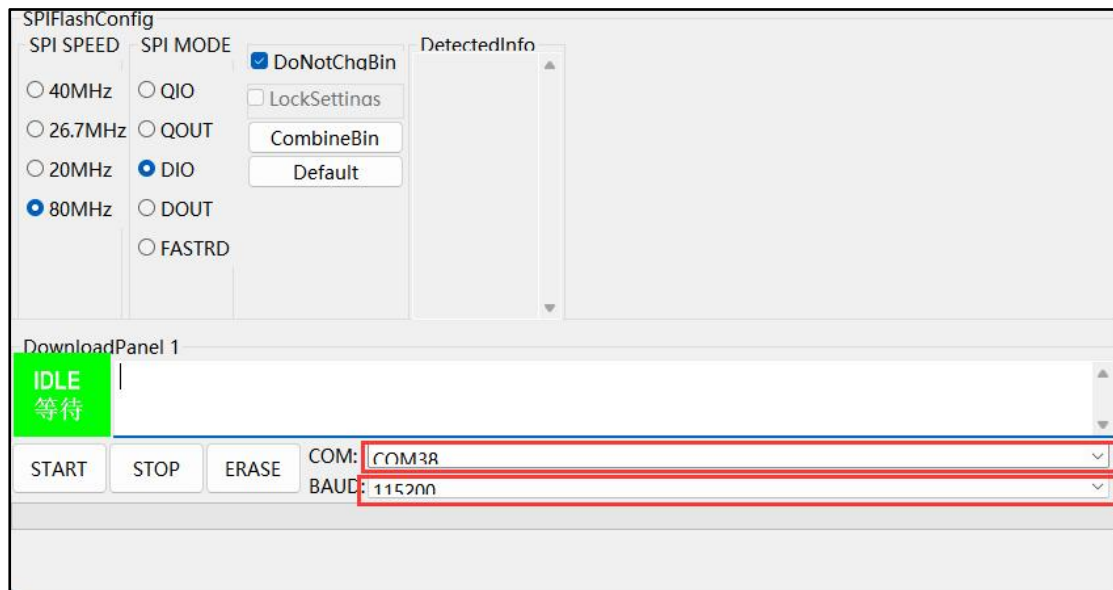
- E. Set SPI SPEED to "80MHz", SPI MODE to "DIO", and keep other settings default as shown in the following figure:



Picture 6 flash\_download\_tool setting 2

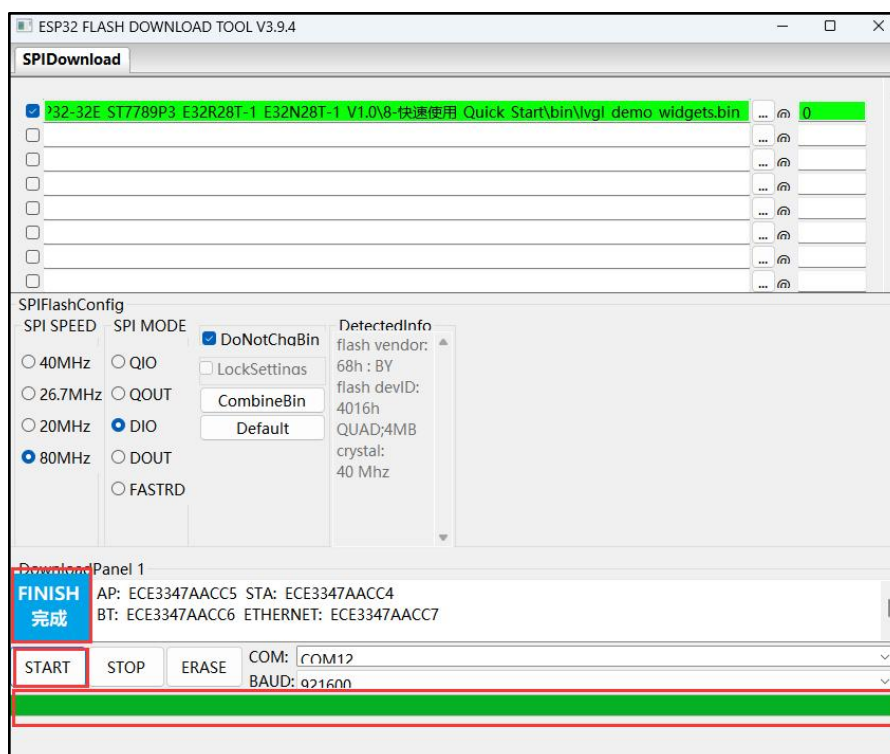
- F. Set COM, as long as the product is connected to the computer normally, the COM port will automatically recognize, click the drop-down menu to select. SetUD, click the drop-down menu to select, the larger the value, the faster the burning speed, but it must not exceed the maximum transmission rate supported by the USB to chip. As

shown in the figure below:



Picture 7 flash\_download\_tool setting 3

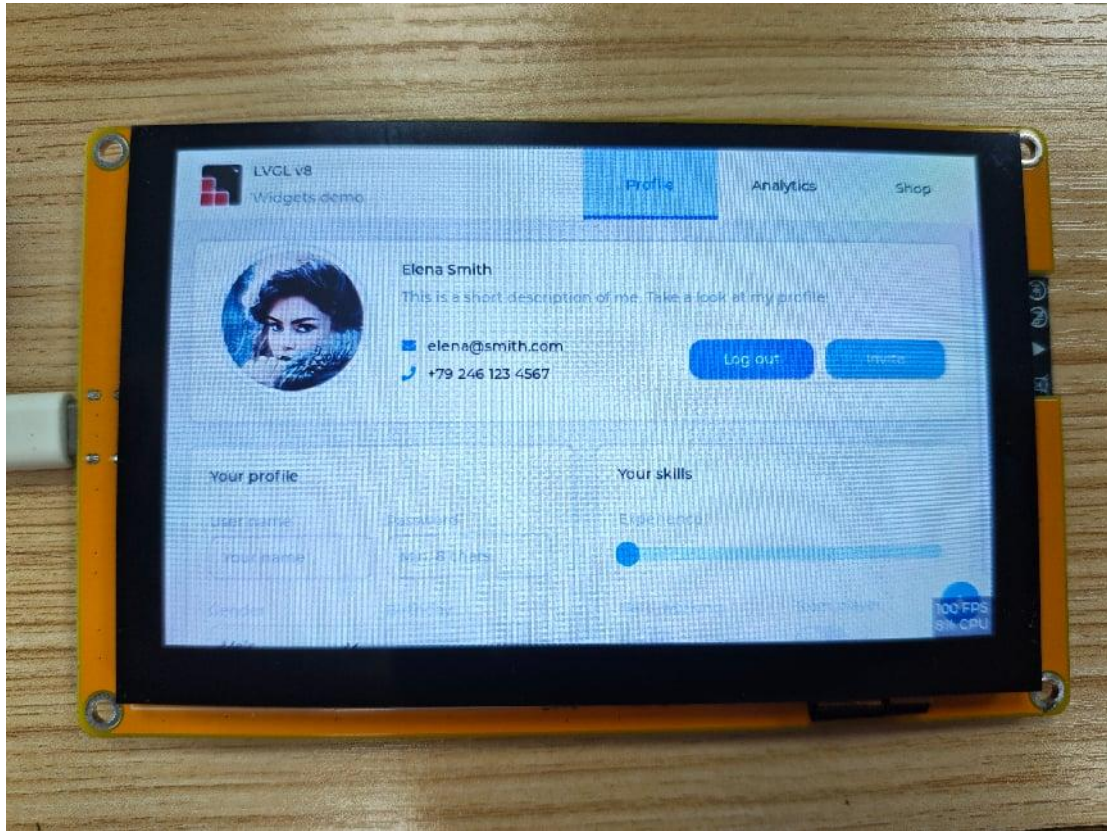
- G. Click the **"START"** button to enter the burning state, and the state changes during the burning process: "等待同步上电" -> "下载中" -> "完成", and the progress bar will also load, as shown in the following figure:



Picture 8 Upload Bin file

### 3. Run the program

After the bin file is burned, press the product reset button or power on the product again, and you can see the program running effect, as shown in the following:



Picture 9 Run the program