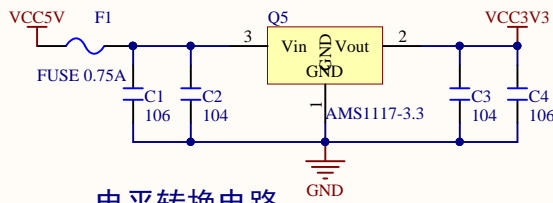
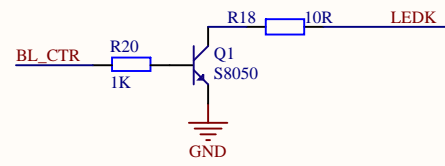


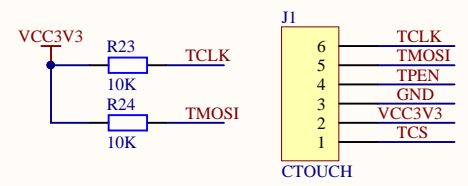
USB电源接口及开关



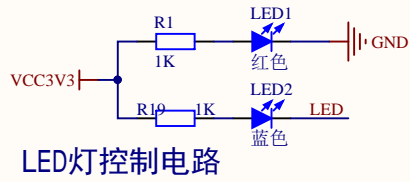
电平转换电路



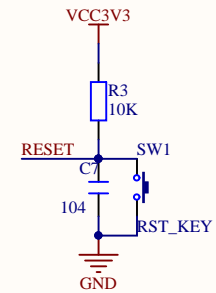
LCD背光控制电路



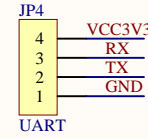
电容触摸屏接口电路



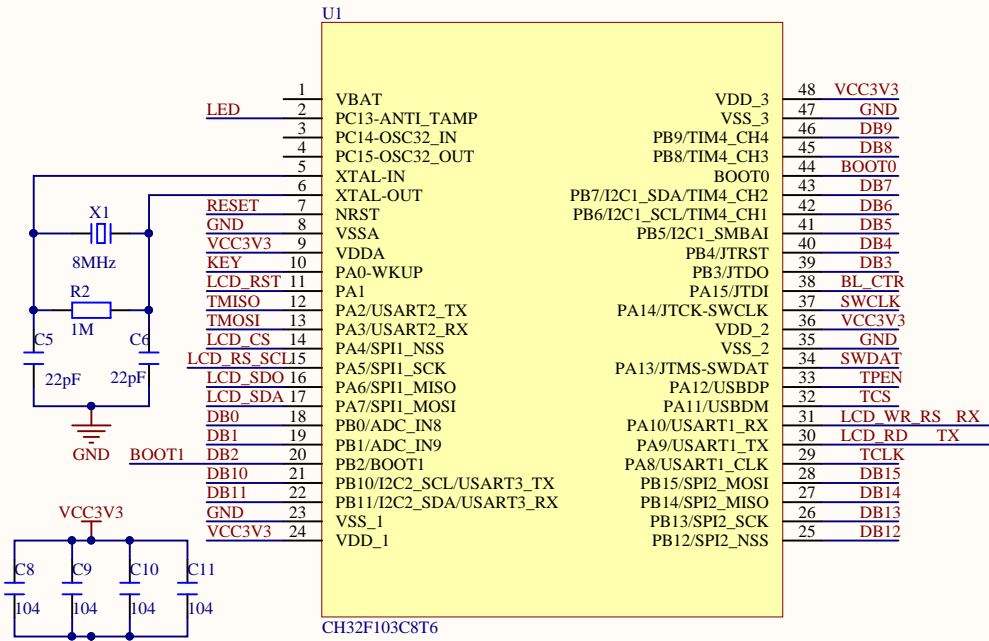
LED灯控制电路



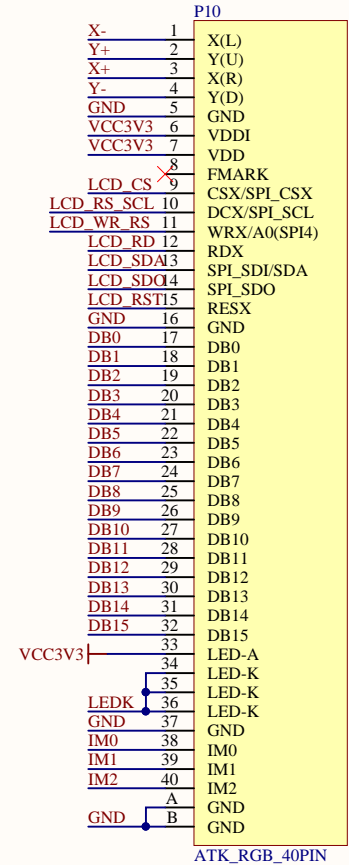
复位控制电路



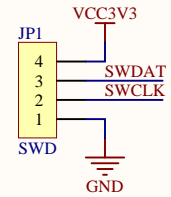
串口接口



CH32F103C8T6主控电路



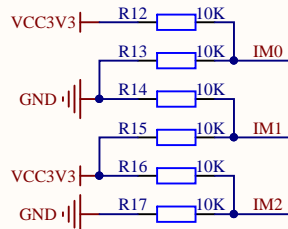
LCD\_40Pin\_FPC接口



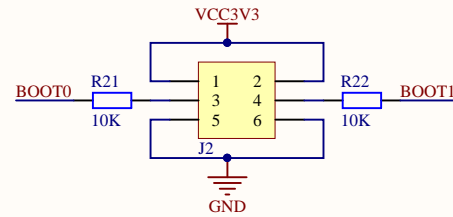
SWD接口



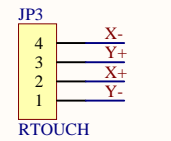
按键电路



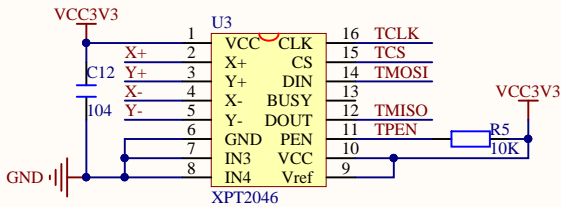
LCD接口选择电路



启动模式选择



电阻触摸屏接口



电阻触摸屏数据处理IC电路

Title		
CH32F103C8T6开发板原理图		
Size	Number	Revision
A4		
Date:	2021/6/24	Sheet of
File:	G:\project\..\CH32F103C8T6_Driver_Board\Drawn\BschDoc	