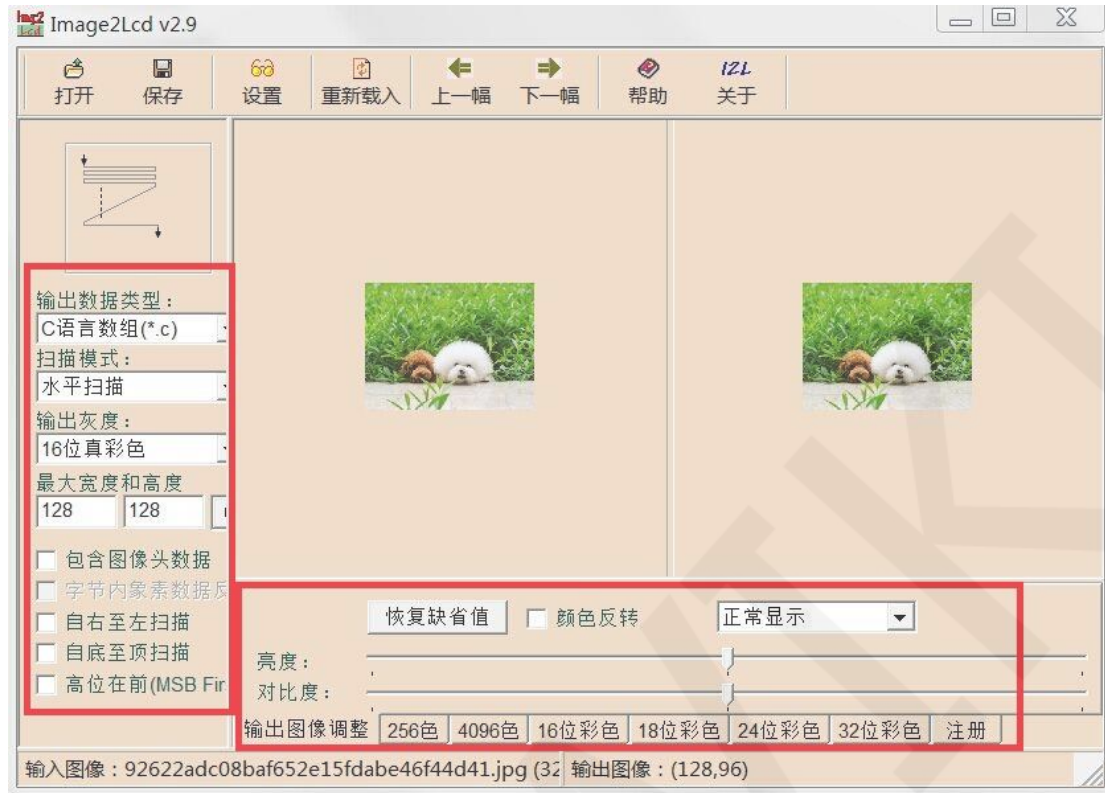


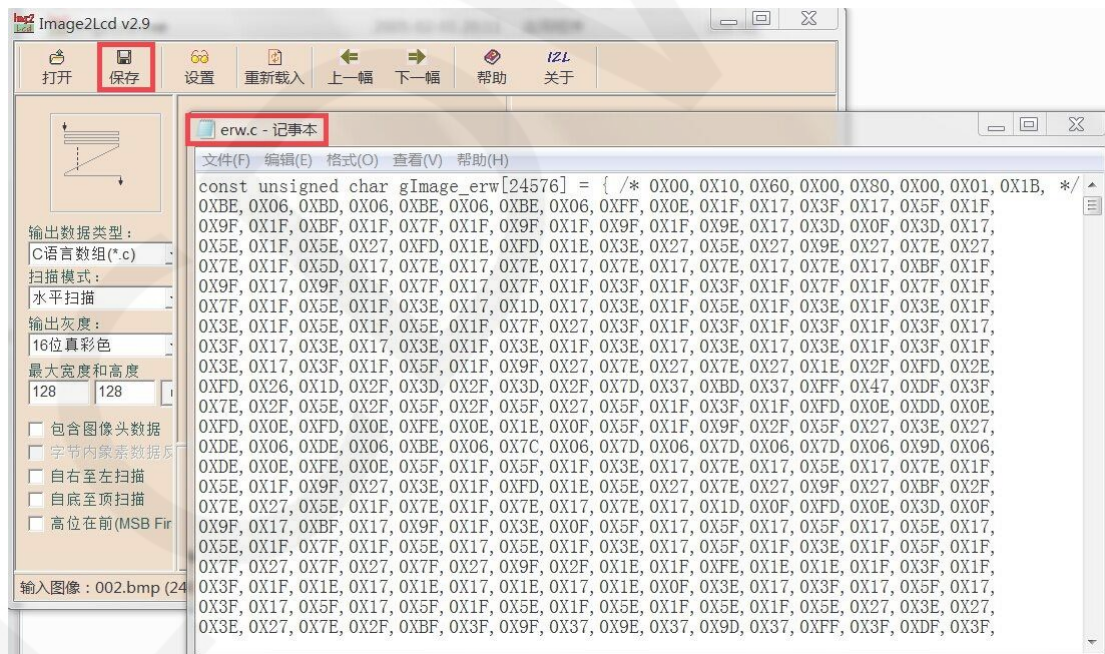
1. Image2Lcd software for picture modulo, monochrome pictures and color pictures can be modulo
2. Open the Image2Lcd software and click the Open button to open a picture, as shown below:



3. Set the image scanning mode and output parameters (need to be set according to the scanning mode of the control IC)



4. After the setting is successful, click the Save button to save the array in the C file format to the selected directory, as shown below:



5. Copy the array of c files into the code to run.