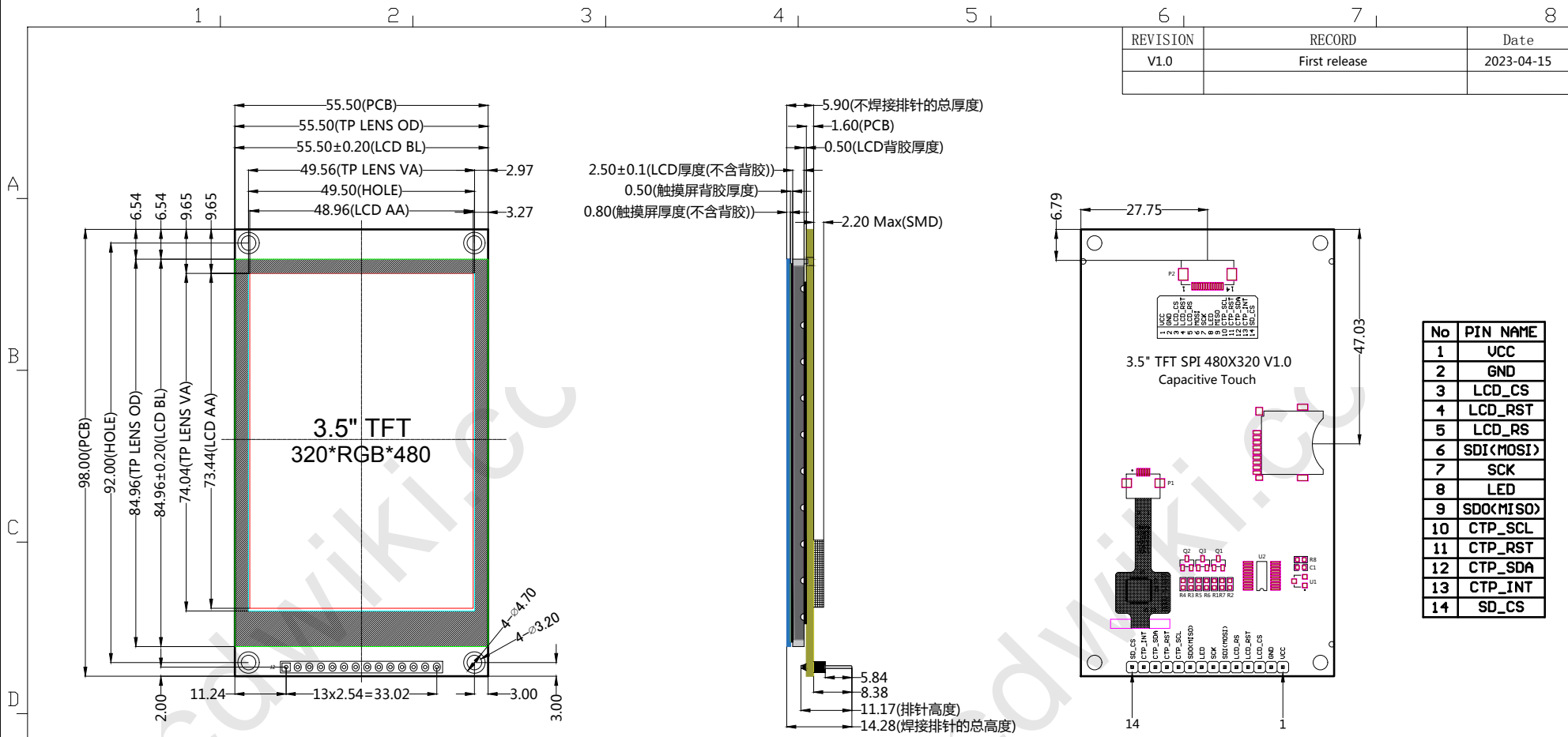


REVISION	RECORD	Date
V1.0	First release	2023-04-15



No	PIN NAME
1	UCC
2	GND
3	LCD_CS
4	LCD_RST
5	LCD_RS
6	SDI(MOSI)
7	SCK
8	LED
9	SDO(MISO)
10	CTP_SCL
11	CTP_RST
12	CTP_SDA
13	CTP_INT
14	SD_CS

NOTES:

1. DISPLAY TYPE: 3.5" IPS TFT
2. VIEWING DIRECTION: ALL 0' CLOCK
3. DRIVE IC: ST7796U
4. POLARIZER MODE: TRANSMISSIVE/POSITIVE
5. RESOLUTION: 320*RGB*480
6. INTERFACE: SPI_4-Line
7. UNMARKER TOLERANCE: ± 0.2
8. OPERATING TEMP: $-10^{\circ}\text{C} \sim +60^{\circ}\text{C}$

深圳市全动电子技术有限公司 ShenZhen QDtech electronic technology Co.,LTD.					DRG DATE	2023-04-15	
					DRAWING	Joan	
TITLE.	LCM OUTLINE	REV.	UNIT	SIZE	(3)	CHECK	Green
SKU.	MSP3526	V1.0	mm	A4		APPROVE	Rose