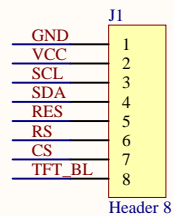
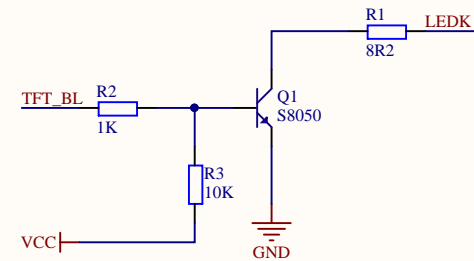


IPS屏30Pin FPC接口



模块7pin排针接口



背光控制电路

深圳市全动电子技术有限公司

ShenZhen QDtech Co.,LTD

[www.QDtft.com](http://www.QDtft.com)

因为专注，所以专业

Title		
1.9inch IPS 模块原理图		
Size	Number	Revision
A4		
Date:	2022/9/22	Sheet of
File:	G:\project\1.9inch\PCB\1.9IPS.SchDoc	Drawn By: