

## Test Platform:

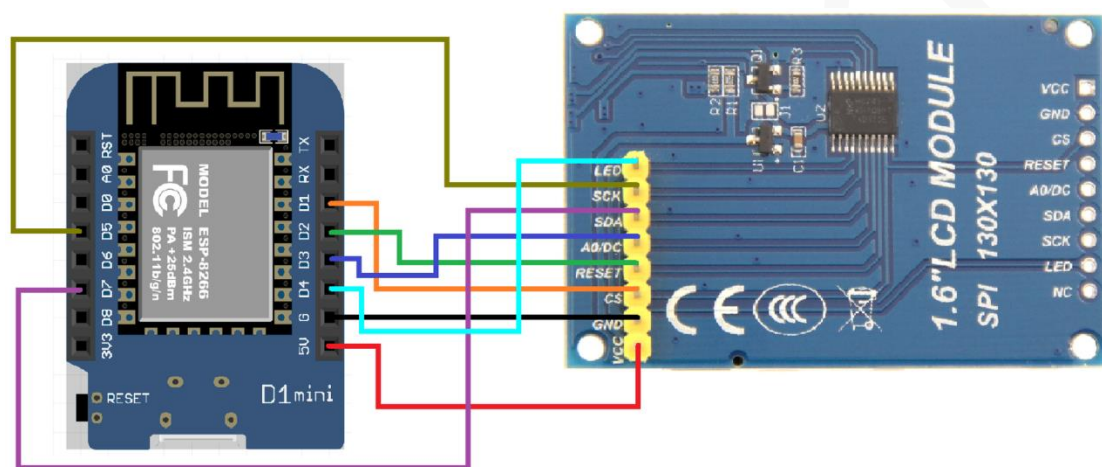
Development board:ESP8266MOD D1 mini

MCU:ESP8266

crystal oscillator :80MHZ

Using hardware SPI functionality

## Wiring Description:



1.6inch LCD module wiring description table		
NUMBER	Module Pin	ESP8266MOD D1 mini Development board corresponding wiring pin
1	LED	D4 (if don't need to control,please connect to 3.3V)
2	SCK	D5
3	SDA	D7
4	A0/DC	D3
5	RESET	D2
6	CS	D1
7	GND	G
8	VCC	5V

## Program function description:

1. This test program is suitable for ESP8266 platform;
2. This set of test program uses the hardware SPI function of the single chip microcomputer platform, so the SDI and CLK connection pin can not be changed;
3. Please follow the above wiring instructions;
4. This test program uses Arduino IDE 1.8.5, please use the same version or above;
5. This suite of tests contains six test examples:

- A. ESP8266\_clear\_screen display simple screen, this test example does not need to rely on the library, can compile and download directly and run, can be used to check whether the wiring is correct and LCD display is normal;

The following test examples rely on the LCDWIKI\_SPI and LCDWIKI\_GUI libraries, and see the user manual for the method of linking the library

- B. Example\_01\_clear\_screen display simple brush screen
- C. Example\_02\_colligate\_test displays dots, lines, and counts the program's running time
- D. Example\_03\_display\_string display characters
- E. Example\_04\_display\_graph graphics (rectangle, circle, triangle, etc.) drawn and filled
- F. Example\_05\_display\_scroll to display pictures, character rotation and scrolling