

- Vertical timing

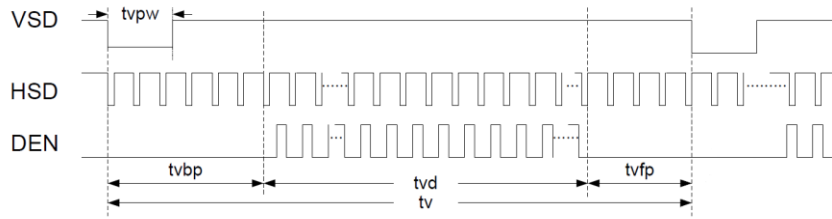


Figure 10.2: Vertical input timing diagram

- Horizontal timing

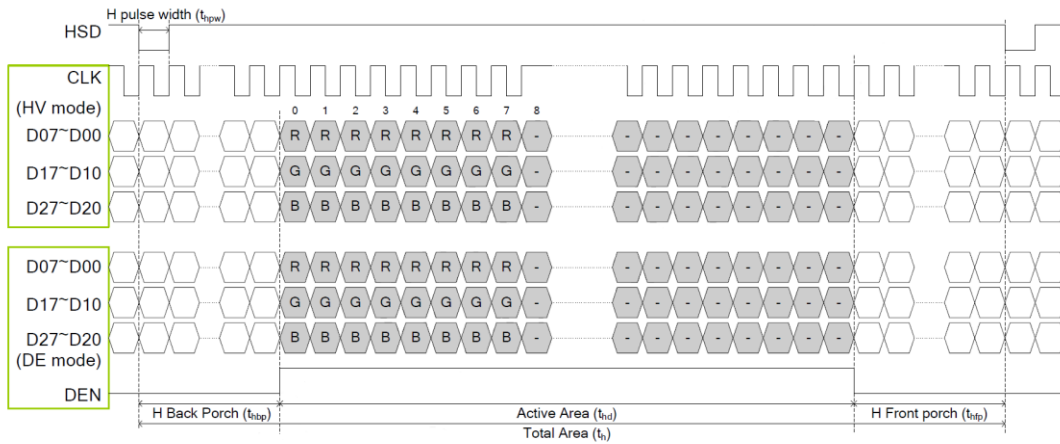


Figure 10.3: Horizontal input timing diagram

Resolution: 1024x600

DE mode

Parameter	Symbol	Spec.			Unit
		Min.	Typ.	Max.	
DCLK frequency	fclk	40.8	51.2	67.2	MHz
Horizontal display area	thd	1024			DCLK
HSD period	th	1114	1344	1400	DCLK
HSD blanking	thb+thfp	90	320	376	DCLK
Vertical display area	tvd	600			$T_H$
VSD period	tv	610	635	800	$T_H$
VSD blanking	tvbp+tvfp	10	35	200	$T_H$

HV mode

- Horizontal timing

Parameter	Symbol	Spec.			Unit
		Min.	Typ.	Max.	
DCLK frequency	fclk	44.9	51.2	63	MHz
Horizontal display area	thd	1024			DCLK
HSD period	th	1200	1344	1400	DCLK
HSD pulse Width	thpw	1	-	140	DCLK
HSD back porch	thbp	160			DCLK
HSD front porch	thfp	16	160	216	DCLK

- Vertical timing

Parameter	Symbol	Spec.			Unit
		Min.	Typ.	Max.	
Vertical display area	tv <sub>d</sub>	600			T <sub>H</sub>
VSD period	tv	624	635	750	T <sub>H</sub>
VSD pulse width	tv <sub>pw</sub>	1	-	20	T <sub>H</sub>
VSD back porch	tv <sub>bp</sub>	23			T <sub>H</sub>
VSD front porch	tv <sub>fp</sub>	1	12	127	T <sub>H</sub>