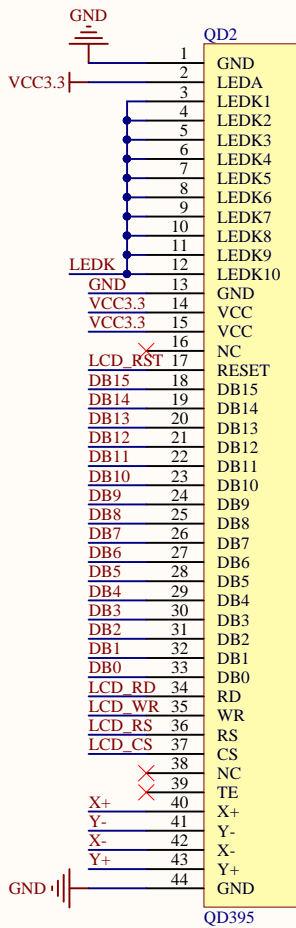


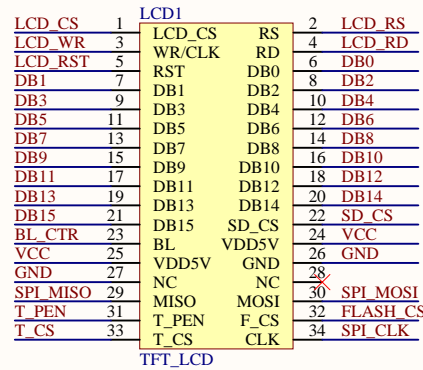
液晶屏48Pin FPC接口



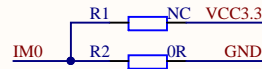
液晶屏44Pin FPC接口

供电电源选择：

外部VCC输入5V时，J1断开
外部VCC输入3.3V时，J1短接

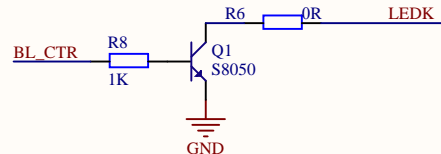


用户34Pin排针接口



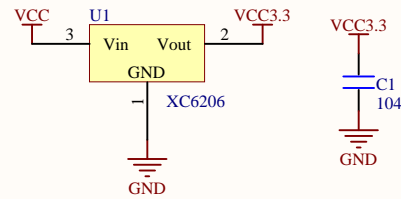
8位/16位数据总线模式选择

焊接R1为8位模式IM0=1，使用低8位DB0-DB7
焊接R2为16位模式IM0=0，使用DB0-DB15

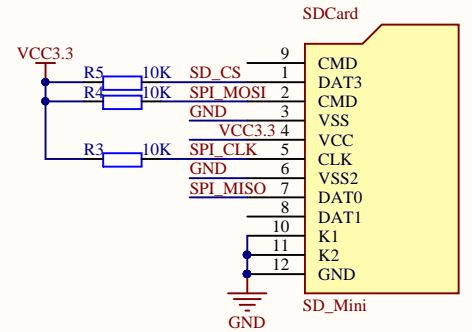


背光控制电路（可IO或者PWM控制）

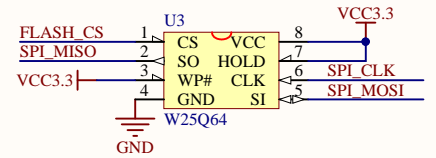
BL_CTR高电平使能



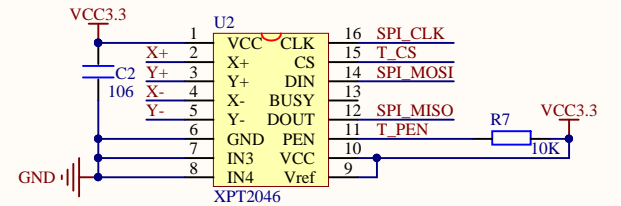
供电电源电路



SD卡接口电路



SPI_FLASH接口电路



触摸控制电路

Title		
Size	Number	Revision
A4		
Date:	2019-05-07	Sheet of
File:	E:\project\LCD3.5&4.0 - 稳定版本备份\Doc\By:	