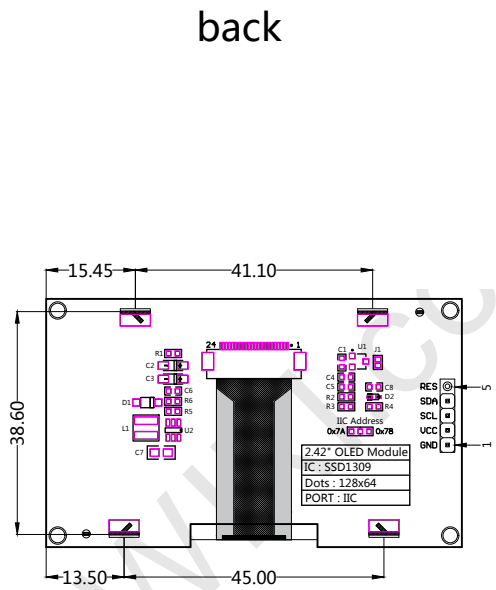
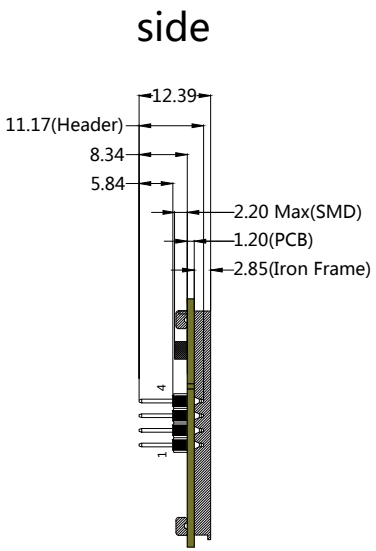
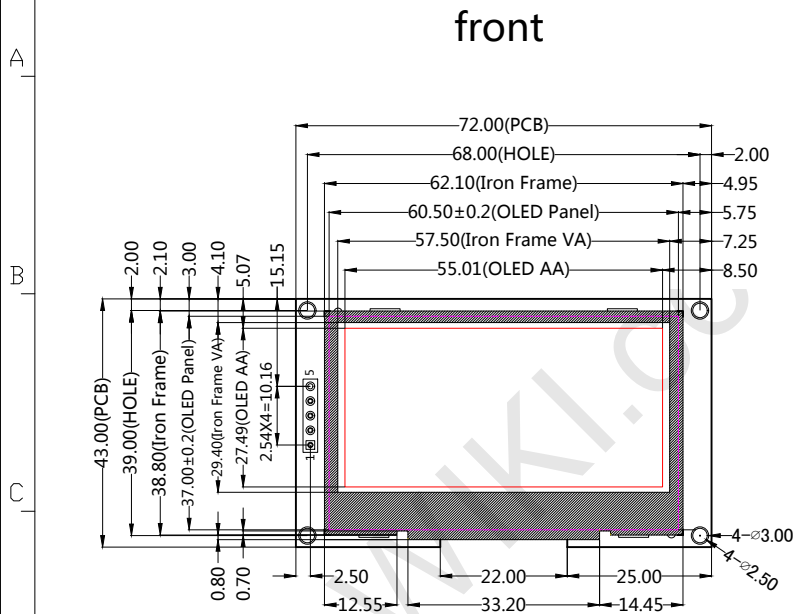


REVISION	RECORD	Date
V1.0	First release	2023-08-11



No	PIN NAME
1	GND
2	UCC
3	SCL
4	SDA
5	RES

- NOTES:
1. DISPLAY TYPE: 2.42" OLED
 2. VIEWING DIRECTION: ALL
 3. DRIVE IC: SSD1309
 4. POLARIZER MODE: TRANSMISSIVE/POSITIVE
 5. RESOLUTION: 128x64 Pixels
 6. INTERFACE: I2C
 7. UNMARKER TOLERANCE: ± 0.3
 8. OPERATING TEMP: $-40^{\circ}\text{C} \sim +70^{\circ}\text{C}$

RES引脚默认不焊接
RES pins are not soldered by default

深圳市全动电子技术有限公司 ShenZhen QDtech electronic technology Co.,LTD.					DRG DATE	2023-08-11
					DRAWING	Joan
TITLE.	LCM OUTLINE	REV.	UNIT	SIZE	CHECK	Green
SKU.	MC242GX	V1.0	mm	A4	APPROVE	Rose